

CIL

Cambridge Isotope Laboratories, Inc.
www.isotope.com

RESEARCH PRODUCTS

CIL's Expanding Line of 99% Enriched Amino Acids for Proteomic Applications

These are the highest isotopically enriched amino acids commercially available.

Higher enrichments provide improved accuracy in quantitative MS-based proteomic applications. Free amino acids are used in metabolic labeling of organisms and animals for global quantitative proteomic analysis. Protected amino acids are used in the synthesis of peptides for use as internal standards for peptide identity and quantitation.



Free Amino Acids

Catalog No.	Description
CLM-2265-H	L-Arginine • HCl (U-¹³C₆, 99%)
CNLM-539-H	L-Arginine • HCl (U-¹³C₆, 99%; ¹⁵N₄, 99%)
CLM-2247-H	L-Lysine • 2HCl (U-¹³C₆, 99%)
CNLM-291-H	L-Lysine • 2HCl (U-¹³C₆, 99%; ¹⁵N₂, 99%)
CLM-2262-H	L-Leucine (U-¹³C₆, 99%)
CNLM-281-H	L-Leucine (U-¹³C₆, 99%; ¹⁵N, 99%)
*CLM-2248-H	L-Isoleucine (U-¹³C₆, 99%)
CNLM-561-H	L-Isoleucine (U-¹³C₆, 99%; ¹⁵N, 99%)

(*currently in production)

Please inquire about other 99% enriched amino acids coming soon or available from stock.

New!

Protected Amino Acids

Catalog No.	Description
CLM-8475-H	L-Arginine-N-FMOC, Pbf (U-¹³C₆, 99%) (Contains Ethyl Acetate) (CP 90-95%)
CNLM-8474-H	L-Arginine-N-FMOC, Pbf (U-¹³C₆, 99%; U-¹⁵N₄, 99%) (Contains Ethyl Acetate) (CP 90-95%)
CLM-7865-H	L-Lysine-α-N-FMOC, ε-N-t-BOC (U-¹³C₆, 99%)
CNLM-4754-H	L-Lysine-α-N-FMOC, ε-N-t-BOC (U-¹³C₆, 99%; U-¹⁵N₂, 99%)

“Using highly enriched materials decreases the amount of unlabeled analog introduced into the mass spectrometer. As a result, using 99% enriched amino acids will increase the accuracy and useful dynamic range for MS-based quantitative proteomic methods compared to using amino acids with lower enrichments.”

— Michael Burgess, Senior Biochemist
Broad Institute, Cambridge, MA

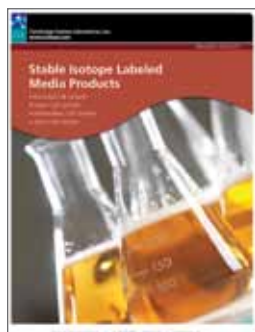
For our international customers

To request a quotation or place an order,
please contact CIL International Sales at
email: intlsales@isotope.com
telephone +1-978-749-8000

CIL has an established network of 27 independent international distributors. Most of our distributors have worked with CIL for more than ten years. CIL's distributor listing is at our webpage, www.isotope.com

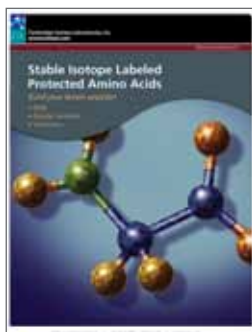
Also Available

Product literature is available for download at isotope.com or contact CIL's Customer Service group.



Stable Isotope Labeled Media Products

- Bacteria Cell Growth
- Insect Cell Growth
- Mammalian Cell Growth
- Yeast Cell Growth

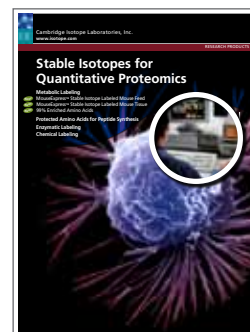


Stable Isotope Labeled Protected Amino Acids

- NMR
- Peptide Synthesis
- Proteomics



Stable Isotope Labeling in Mammals with ^{15}N Spirulina



Stable Isotopes for Quantitative Proteomics

- Metabolic Labelling
- Protected Amino Acids for Peptide Synthesis
- Enzymatic Labeling
- Chemical Labeling



Cambridge Isotope Laboratories, Inc. 50 Frontage Road Andover, MA 01810-5413

To place an order please contact CIL:

tel 978-749-8000

fax 978-749-2768

800-322-1174 (USA)

cilsales@isotope.com