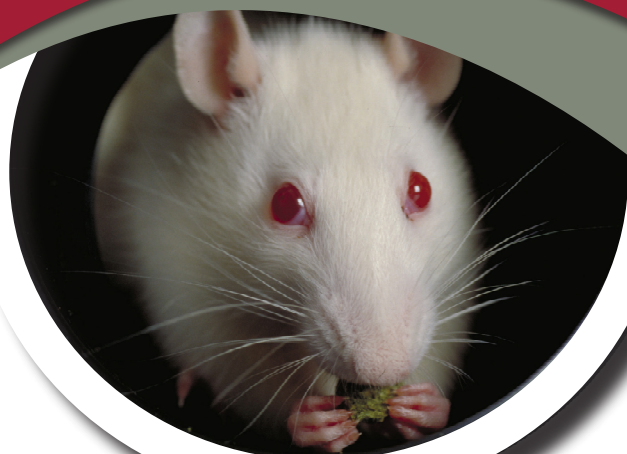


NEW for Proteomics

Stable Isotope Labeled Mouse Feed



CIL is pleased to offer labeled feed for the metabolic incorporation of stable isotope enriched amino acids into mice and rats.

Mouse Feed Labeling Kit

CIL's Mouse Feed Labeling Kit (CIL catalog # [MLK-LYS-C](#)) consists of 1 kg of L-Lysine $^{13}\text{C}_6$ feed and 1kg of unlabeled feed. This nutrient mix metabolically labels the entire mouse proteome with L-Lysine $^{13}\text{C}_6$ for use in quantitative global proteomic research using tryptic digests. This diet is unique in that it contains L-Lysine $^{13}\text{C}_6$ at an isotopic enrichment of 99%. This material is now available through CIL. Custom formulations are available in other labeling patterns and amino acid substitutions upon request.

Spirulina

Spirulina (^{15}N , 98%+) (CIL catalog # [NLM-8401](#)) is now available from CIL. This unique blue-green algae, in combination with a protein/amino acid-free nutrient mix, provides an efficient feed to metabolically label the entire animal proteome with ^{15}N .

Reference:

Daniel B. McClatchy, Meng-Qiu Dong, Christine C. Wu, John D. Venable, and John R. Yates (2007). ^{15}N metabolic labeling of mammalian tissue with slow protein turnover, *Journal of Proteome Research*, 6(5), 2005-2010.

Spirulina (^{13}C , 98%+) (CIL catalog # [CLM-8400](#)) is also available. This material, in combination with a nutrient mix, may be used to investigate protein turn-over in a number of organisms including mammals.